

FITNESS • EDUCATION • FUN

# PEAK

SPORTS AND LEARNING

## Enrolment Handbook St Johns Dapto



1300 GO PEAK  
1300 467 325

[www.peaksportslearning.com.au](http://www.peaksportslearning.com.au)

# Table of Contents

Enrolling with Peak Sports & Learning .....	3
Centre Philosophy .....	4
Schools serviced .....	4
Service Days & Hours.....	5
Fee Information .....	6
Our Team.....	7
Contacting Us .....	7
Registering.....	8
Children with Medical Conditions and Medication .....	9
Making Bookings .....	10
Arrival & Departure at the centre .....	13
Our Program .....	14
Our Learning & Communication Tools .....	18
Child Care Subsidy .....	19
Statements and Account Payments .....	21
The National Quality Framework .....	22
Peak Dapto Rating & Assessment.....	23
Policy Information .....	24
Nutrition .....	24
Sun Protection .....	25
Electronic Devices.....	25
Excursions.....	26
Lost Property .....	26
Privacy Statement.....	26
Complaints & Grievances .....	26
Enrolment Terms & Conditions .....	27
Further Information.....	27
Contact Us .....	28
Where to find us? .....	28

# Enrolling with Peak Sports & Learning

## St Johns Dapto

Peak Sports and Learning operates Monday to Friday 51 weeks of the year, (closing only on public holidays and for one week over the Christmas period) caring and educating primary school aged children.

We welcome all members of our community and work in partnership with families in the education and care of their children. This handbook is designed to assist you in understanding how our service operates and to appreciate our approach to the education and care we provide to your child.

Peak Sports and Learning operates from St John's Public School. Peak Sports and Learning has access to the schools hall and playground facilities, which is where the centre is based.

Peak Sports and Learning offers Before School Care, After School Care and Vacation Care to primary school aged children enrolled in Kindergarten to Year 6. Kindergarten students can attend in the calendar year they start school, and Year 6 students can attend up until the end of the calendar year that they complete Year 6.



 **Acknowledgement of Country**

Peak Sports and Learning, would like to acknowledge and pay our respect to the Traditional Custodians of the Land on which our centre operates on.

We pay our honour and respect to the Elders past, present and future as this land is was and always will be, Traditional Custodians Land. We endeavour to support, embed and deliver teachings, history and traditions within our centre and service environment that connects our children, educators and families to the nations.



  
twinkl.co.uk

# Centre Philosophy

Our philosophy is based on the concepts of FITNESS, EDUCATION & FUN! The three ingredients to getting children actively involved in sports, literacy and numeracy and most of all having rewarding, fun experiences whilst in the process.

Peak Sports and Learning strives to provide the highest level of education and care for each individual child in a warm, nurturing and safe environment.

We strive to create a welcoming environment of collaboration, that enables building meaningful relationships, with each individual child, all families and members of the community. Our environment plays a critical role in fostering a sense of belonging and acceptance to ensure all children feel safe and secure in our care. We ensure that we foster an environment that is inclusive, shows respect and appreciation for cultural diversity and cares for the environment and building sustainable practices.

We endeavour to deliver a program that creates stimulating and enriching educational experiences, encourages fun and inclusive physical activity and caters to the interests and needs of groups and individual children. It is our goal that our program that meets the intellectual, moral, social, creative, emotional, and physical needs of each child. We provide a uniquely balanced educational program that fosters the development of children's learning in all aspects. Our program includes time for daily play, arts and crafts, structured and unstructured activities, recreation and sport, and indoor and outdoor activities. We value the foundation that a healthy childhood gives to a successful life.

We believe in order to deliver this program and foster such an environment, we have to have the right people. We strive to employ and develop the most exceptional Educators who have a genuine passion working with children and the professional knowledge and exemplary practice to deliver our quality care and program.

## Schools serviced

Schools serviced:

- St John's Catholic Primary School (on site)

It is important to keep your child's school informed of your child/s pick up schedules and also their first day of attendance to help them get to the right collection point. Children meet for After School Care outside the school hall. Kindergarten children on site are collected from their classroom of an afternoon when in attendance.

We understand there can be nerves when starting. Families are welcome to pop into the centre any time between 3:30pm-6pm to check out the centre and introduce your child/children to the staff.



# Service Days & Hours

## Before School Care

### Operating Hours/Days

6:30am- 8:30am

Monday – Friday, St John's Catholic Primary School Days

### Inclusions

Breakfast provided each morning.

Children enjoy a healthy and nutritious breakfast to start the day.

- Cereals: Weetbix, Oats, Corn Flakes, Sultana Bran, Cheerios
- Toast: Vegemite, cheese, honey, jam, cream cheese on wholemeal bread.
- Seasonal Fruit: Watermelon, rockmelon, apples, oranges, pears etc
- Beverages: Water & milk

## After School Care

### Operating Hours/Days

2:30pm- 6:00pm

Monday – Friday, St John's Catholic Primary School Days

### Inclusions

Afternoon Tea provided each afternoon.

Children enjoy platter style afternoon tea including fruit, sandwiches and biscuits.

- Fresh food Platter: Watermelon, rockmelon, apples, oranges, pears, kiwi fruit, cucumber, carrot etc
- Sandwich Platter: Vegemite, cheese, honey, jam, and cold-meats served on wholemeal bread.
- Biscuits: Saos, scotch fingers, arrowroots.

## Vacation Care

### Operating Hours/Days

7:00am- 6:00pm

Monday – Friday, St John's Catholic Primary School Days School Holidays and Pupil Free days

### Inclusions

Breakfast, morning and afternoon tea provided daily.

Breakfast: Each morning up until 9am, children enjoy a healthy and nutritious breakfast to start the day.

- Cereals: Weetbix, Oats, Corn Flakes, Sultana Bran, Cheerios
- Toast: Vegemite, cheese, honey, jam, cream cheese on wholemeal bread.
- Seasonal Fruit: Watermelon, rockmelon, apples, oranges, pears etc
- Beverages: Water & milk

Morning and Afternoon Tea: Fresh fruits & veggies, fruit bars, plain popcorn, vege crisps etc.

Beverages: Water

# Fee Information



Booking/cancellation with **more** than 24 hours notice

- Families complete through FullyBooked account
- No additional fees apply

Booking/cancellation with **less** than 24 hours notice

- FullyBooked family account locked out. Contact office for booking/cancellation.
- Booking fees & Cancellation fees apply.

BEFORE SCHOOL CARE		
Notice period	Session Fee	Cancellation
More than 24 hours notice (from session start time)	<b>\$25</b> (Less subsidies)	No fee
Less than 24 hours notice (from session start time)	<b>\$29</b> (\$25 + \$4 fee less subsidies)	\$3 cancellation Fee* (Session removed)

**\*Latest time to cancel:** Where notice of a cancellation is received after 6pm the day prior, the usual session fee applies, less subsidies where entitled.

AFTER SCHOOL CARE		
Notice period	Session Fee	Cancellation
More than 24 hours notice (from session start time)	<b>\$35</b> (Less subsidies)	No fee
Less than 24 hours notice (from session start time)	<b>\$39</b> (\$35 + \$4 fee less subsidies)	\$4 cancellation Fee* (Session removed)

**\*Latest time to cancel:** Where notice of a cancellation is received after 2pm on the day of care, the usual session fee applies, less subsidies where entitled.

VACATION CARE		
Notice period	Session Fee	Cancellation
More than 24 hours notice (from session start time)	<b>\$68</b> (Less subsidies)	No fee
Less than 24 hours notice (from session start time)	<b>\$73</b> (\$68 + \$5 fee less subsidies)	\$5 cancellation Fee* (Session removed)

**\*Latest time to cancel:** Where notice of a cancellation is received after 6pm the day prior, the usual session fee applies, less subsidies where entitled.

Where a medical certificate is produced no cancellation fee applies.

**Vacation Care Additional Fees:** Excursion and In-service Activities can attract additional fees as specified on the relevant Vacation Care program. These are added to your statement along with the daily charge.

**Late Pick Up Fees:** After 6:00pm a \$20.00 charge will be issued plus an additional \$1 per minute. Late fees are applied at the end of the week when attendance rolls are finalised by the office.

## Our Team

Here, our Educators create a nurturing environment which is safe and encourages confidence whilst teaching children how to care and respect one another and the environment. Peak Sports and Learning's team is made up of current School teachers, University students studying Education and other staff who are currently studying in the childcare sector. Responsible Persons at Peak Sports and Learning team are fully qualified in First Aid, Asthma, Anaphylaxis and Child Protection. You are encouraged to speak to the Responsible Person prior to enrolment of your child(ren).

Position	Name	Qualification
Directors/Owners	John Good	Bachelor of Primary Education
	Grant Neill	Bachelor of Education (PDHPE)
	Ashleigh Neill	Bachelor of Education (Primary). Major in PDHPE & Aboriginal Education
Nominated Supervisor	Ashleigh Neill	Bachelor of Education (Primary). Major in PDHPE & Aboriginal Education
Educational Leader	Ashleigh Neill	Bachelor of Education (Primary). Major in PDHPE & Aboriginal Education
Responsible Person/Service Support Manager	Petra Holmes	Certificate IV in School Aged Education & Care
Responsible Person/s	Tiarne Rogers	Diploma of Early Childhood Education and Care

## Contacting Us

### Head Office (Administration):

Our office is available for all booking requests, absences notifications, account questions and general feedback and questions. As our centre Educators are not present during the day time at the centre, we take all the booking information so Educators have a confirmed roll upon arrival for their shift. We separate our administration process so our Educators sole focus is on the Education and Care of your children. If you have any questions and are not sure who to contact at any time, please feel free to contact the office.

Office Hours: Monday - Friday 8:00am - 5:30pm

Address: 22 Veronica Street, Warilla NSW 2528

Contact: 1300 GO PEAK (1300 467 325) or email: [admin@peaksportslearning.com.au](mailto:admin@peaksportslearning.com.au)

If you need to speak to one of our Educators directly during BSC/ASC/VAC service times, please call 1300 467 325 and press **option 2**.

# Registering

Registration is completed online from our website [www.peaksportslearning.com.au/dapto](http://www.peaksportslearning.com.au/dapto)

**ST JOHN'S DAPTO**

Operating from St John's Catholic School  
School Hall  
Access from Werowi Street, Dapto NSW 2530

Serving:  
**St Johns Catholic Primary School**  
Vacation Care (All schools)

RATED  
**EXCEEDING**

Register or Log in

Enrolment Handbook

Vacation Care Program

Sign in

Email

Password

SIGN IN

Forgot Password?

[No account yet? Register now](#)

To register an enrolment and account for your child(ren) please click the “No account yet? Register now” option.

The following information will be required to complete the process and receive all benefits:

- Centrelink CRNs for yourself and you child(ren) enrolling
- Credit card or bank account details for direct debit
- At minimum, one emergency contact in the case that you are unable to be contacted in an emergency
- Authorised nominees for pick up and drop off authorisation at the centre
- Any health information that relates to any diagnosed allergy, anaphylaxis, dietary requirements
- If your child has ASTHMA, ANAPHYLAXIS or DIABETES their Action Plan must be provided prior to commencement.
- If your child has additional needs, you will be required to complete our Additional Support Information Form prior to commencement.

Recommended browser: Google Chrome or Safari.

*Note: For first time registrations please remember to verify your email address by checking your email inbox after registering for the first time!*

Our administration team will be in contact with you within 24 hours of enrolling, or alternatively you can call us on 1300 467 325 to finalise your registration once complete.



# Children with Medical Conditions and Medication

## Anaphylaxis, Asthma, Diabetes and other health conditions

If your child is diagnosed with Anaphylaxis, Asthma or Diabetes a Medical Management Plan must be provided PRIOR to commencement. Medical Management Plans must be dated within 12 months and need to be updated annually from the child's Medical Practitioner. The Responsible Person will complete a Risk Minimisation Plan in consultation with the Parent/Carer.

## Children with Additional Needs

Every child has the right to feel a sense of belonging, to feel a part of something special and the opportunity to strive to their full potential. At Peak Sports & Learning, educators and management work collaboratively with families of children who have additional needs. Peak will collect appropriate information about children in the format of an Additional Support Information form prior to commencement.

Families are encouraged to seek advice and support from educators in order to arrange assistance including children with additional needs into the program. As part of the Inclusion and Professional Support Program (IPSP), the Inclusion Support Subsidy (ISS) plays a key role in supporting eligible child care services to include children with ongoing high support needs in quality care.

## Medications

At Peak Sports and Learning we will facilitate effective care and health management of children who are taking medications for health problems, prevention and management of acute episodes, illness or medical emergency. We will do this by the safe administration of medication and compliance with the regulations.

- Peak Sports and Learning only administers prescribed medication to children. Medication must be in its original container, bearing the original label with the name of the child to whom the medication is relevant to and bearing the original label and instructions and before the expiry or use by date.
- Non-prescribed medication e.g. cough medicine etc will not be given unless a written consent from the child's doctor is provided.
- The medication must be clearly labelled with the child's name and details of administration.
- The staff member who administers the medication will log it on a Medication Record.
- There will be no unsupervised self-administration of any medicine.
- All staff members are to be informed of any allergies from food or substances.
- The staff may refuse to administer medication on the authorised supervisor's advice if in her/ his professional opinion, doubt exists about necessary for and/ or suitability of the medication.
- All medicine will be kept in a lockable, safe place. Accessible by staff members only.

**Please ensure you bring your child's puffer or epi pen to the centre where required.**



# Making Bookings

Log in link: <https://peak.fullybookedccms.com.au/family/login>

Once registration is completed and finalised a booking calendar will appear at the bottom of your family account. Select the green option **Add/Change Booking**. This will only be available for bookings made 24 hours in advance. If the session is within 24 hours, contact our office.

**STEP 1:** Click on the Add/Change Bookings Option

The screenshot shows the Peak Sports Learning family account dashboard. At the top, there is a 'Logout' link. Below the header, a welcome message states: 'Welcome to Peak Sports Learning Pty Ltd's Enrolment & Booking web site.' A blue banner asks: 'Would you like to make a booking? You can do this by clicking on the "Edit Bookings" button in the bookings window below.'

The dashboard is divided into several sections:

- Parents/Guardians & Contacts:** Includes a table with columns 'Name', 'Relationship', and 'CRN'. There are 'Add Contact' and 'Edit' buttons. A note states: '\* represents the primary parent'.
- Children:** Includes a table with columns 'Name', 'Date Of Birth', and 'CRN'. There are 'Add Child' and 'Edit' buttons. A note states: 'Use the child's drop down menu to upload required support documentation.'
- Account Details:** Includes an 'Update Account Details' button.
- Statements:** Includes links for 'Latest Statement - View All' and 'Latest Statement of Entitlement - View All'.
- Preview Current Bookings:** Includes a 'Review All Past Attendances' button and a green 'Add/Change Bookings' button, which is circled in red. Below this is a calendar for January 2020, showing days from Monday to Sunday.

**STEP 2:** Select the **Care Type** (Before School Care, After School Care, Vacation Care) then **Child Name** (For more than one child, you will need to repeat this process)

The screenshot shows the 'Update After School Care Bookings' form. At the top, there is a 'Logout' link. Below the header, the form title is 'Update After School Care Bookings: Child Name'. The form contains three dropdown menus: 'Peak Sports Learning - Centre', 'After School Care', and 'Child Name'.

**STEP 3:** Click on available days to add and remove using the colour code reference at the top as a guide or for bulk bookings see Step 3A.



Logout

## Update After School Care Bookings:

Peak Sports Learning

After School Care

Clicking on available days will add / remove them from your selection and please ensure you click 'Save changes' to save all changes to the calendar before clicking away from this page.

Available
Booked
Attendance w/o booking
Cancelled
Full
Service Not opened  
Almost Full

[Toggle Full Calendar](#)

2020

### January

M	T	W	T	F	S	S
		1	2	3	4	5
6	7	8	9	10	11	12
13	14	15	16	17	18	19
20	21	22	23	24	25	26
27	28	29	30	31		

### February

M	T	W	T	F	S	S
					1	2
3	4	5	6	7	8	9
10	11	12	13	14	15	16
17	18	19	20	21	22	23
24	25	26	27	28	29	

### March

M	T	W	T	F	S	S
						1
2	3	4	5	6	7	8
9	10	11	12	13	14	15
16	17	18	19	20	21	22
23	24	25	26	27	28	29
30	31					

### April

M	T	W	T	F	S	S
		1	2	3	4	5
6	7	8	9	10	11	12
13	14	15	16	17	18	19
20	21	22	23	24	25	26

### May

M	T	W	T	F	S	S
				1	2	3
4	5	6	7	8	9	10
11	12	13	14	15	16	17
18	19	20	21	22	23	24

### June

M	T	W	T	F	S	S
1	2	3	4	5	6	7
8	9	10	11	12	13	14
15	16	17	18	19	20	21
22	23	24	25	26	27	28

**STEP 3A: BULK BOOKINGS** At the bottom of the bookings calendar you can make bulk requests. Fill out the information fields and select apply. Between the dates selected, the system will only book dates that the service is available for the particular care type you are booking e.g. After School Care.

19	20	21	22	23	24	25	16	17	18	19	20	21	22	21	22	23	24	25	26	27
26	27	28	29	30	31		23	24	25	26	27	28	29	28	29	30	31			
							30													

I would like to add all Mondays between 01/01/2020 and 31/12/2020 Apply

[Next](#)

[Back](#)

**STEP 4:** Ensure you click **Next** and then **Confirm Changes** to finalise bookings.

I would like to   between  and

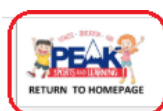
### Adding New Bookings

• Mon, 15 Apr 2019 - Vacation Care Pizza & PJ Party

### Peak Sports Learning - (Centre) Cancellation Policy

- Within 12 hours of session starting: Changes or cancellations will incur the full fee.
- Within 2 days of session starting: Changes or cancellations will incur a \$6 fee.
- More than 2 days from session starting: The booking will be removed and there will be no charge.

**TIP:** To return to home page at any time, click the logo in the top left-hand corner.



Logout

Welcome to Peak Sports Learning Pty Ltd's Enrolment & Booking web site.

Would you like to make a booking? You can do this by clicking on the "Edit Bookings" button in the bookings window below.

**TIP:** If you need to check your bookings, the calendar will show all confirmed bookings once all steps above have been followed.

**Preview Current Bookings**

< > today **February 2020** month week day

Mon	Tue	Wed	Thu	Fri	Sat	Sun
27	28	29	30	31	1	2
3 3pm ASC, ...	4 3pm ASC, ...	5 3pm ASC, ...	6	7	8	9
10 3pm ASC, ...	11 3pm ASC, ...	12 3pm ASC, ...	13	14	15	16
17 3pm ASC, ...	18 3pm ASC, ...	19 3pm ASC, ...	20 3pm ASC, ...	21	22	23
24 3pm ASC, ...	25 3pm ASC, ...	26 3pm ASC, ...	27	28	29	1
2	3	4	5	6	7	8

# Arrival & Departure at the centre

## Authorised Persons

Only a person authorised in writing or nominated on the FullyBooked enrolment form are able to collect or drop off an enrolled child. An authorised person must be at least 16 years old, able to produce photo identification.

Any person/s unfamiliar to staff, will be asked to produce photo identification before the child can leave the premises. If a staff member is not comfortable with identification provided, the staff will contact the parent/guardian for verbal permission to release the child. If the parents cannot be contacted, the centre supervisor will notify the emergency contacts as listed in your enrolment form.

## Before School Care

### Arrival

Children are dropped at the centre by parents/carers. Parents/Carers must sign their child into the care of Peak Sports and Learning. Peak Sports and Learning will then care for the child until drop off time at the child's school.

### Departure

Peak Sports and learning will drop each child at his/her school. The staff member will ensure each child enters the school ground into the care of that school and their staff.

## After School Care

### Arrival

Children will go to the meeting point or bus lines and the Peak staff will collect them from there. A roll will be marked by the attending staff member before leaving the school. If a child has not made their way to the meeting point Parents/Carers will be notified immediately. We ask all parents to notify the office by phone or email if their child is going to be absent.

### Departure

Parents/Carers must notify staff when they arrive to collect their child. The parent/guardian on collection of their child must sign out their child on the attendance roll. When collecting children parents are encouraged to stay and discuss their child's afternoon.

## Vacation Care

### Arrival

Children are dropped at the centre by parents/carers. Parents/Carers must sign their child into the care of Peak Sports and Learning. ***Children must arrive with enclosed shoes, hat, sun smart clothing, lunch, labelled drink bottle each day.***

### Departure

Parents/Carers must notify staff when they arrive to collect their child. The parent/guardian on collection of their child must sign out their child on the attendance roll. When collecting children parents are encouraged to stay and discuss their child's day.



# Our Program

How do children learn at Peak Sports and Learning?

## Aim

Children are known as constructivists, which mean they learn by doing. They construct their knowledge through events, individual actions and exploration to discover their properties. Children are curious, active explorers who respond to the environment according to their understanding of it.

Having qualified primary teachers and educators on the staff at Peak Sports and Learning we believe that we have a deep understanding of how children learn. Having this understanding will allow us to better develop their social, emotional, physical, thinking skills. Peak Sports and Learning's staff are up to date on current educational philosophies and continually engage in professional development. This allows your child to be taught in an environment that provides the best possible opportunities for your child.

## Programming

Giving children the opportunity to learn in an environment that is targeted at enhancing their skills is what Peak Sports and Learning aim to do. Peak Sports and Learning follow Sports and Teaching programs that are practical, enjoyable and relevant to their physical and educational level. Peak Sports and Learning will always provide positive feedback to students enabling them to gain a deep understanding of a theory or fundamental skill.

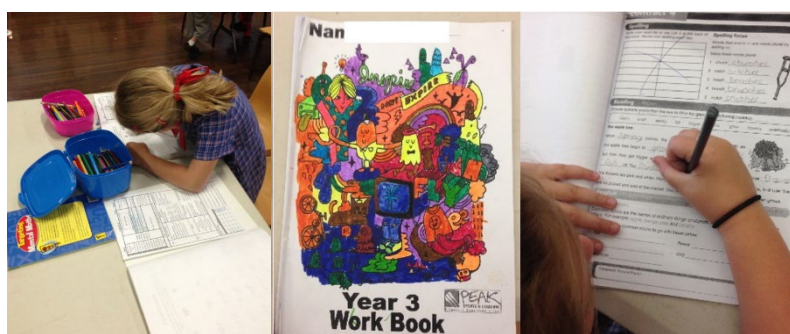
You are encouraged to talk to the staff at Peak Sports and Learning in regards to any special programming needs for your child.

## Educational Programming (Literacy and Numeracy)

Peak Sports and Learning's tuition program has strong ties with current Department of Education & Communities curriculum's and syllabus outcomes. This allows your child to practice and gain feedback from qualified primary teachers and educators on current outcomes that they will be studying at school.

You are encouraged to talk to Peak Sports and Learning's teachers in regards your child's current academic levels. In response the Teachers at Peak Sports and Learning can better cater a program to suit your child's needs. Results such as NAPLAN tests and yearly reports are suitable records to help us cater for your child if you wish to provide them.

Your child is encouraged to bring homework or projects to Peak Sports and Learning. If homework is brought to the centre, children will complete their homework under the guidance of qualified primary teachers and educators.



## Sports Programming

Using the game sense approach Peak Sports and Learning has developed a program that focus on fundamental skill development through minor games. The focus of this approach is not just skill development; however the focus is on developing a child's understanding of the game. It has been proven that as a child's understanding of a game improves that child's enjoyment is increased, as too is their overall skill level. Minor games covering various sports will be used in a non-competitive environment.

Some examples of sports that are included in the program are:

Sports Programmed during term			
Oz tag	Hockey	T-Ball	Athletics
Cricket	Tennis	Soccer	Basketball
Other Sports			
Touch Football	Netball	Ultimate Frisbee	Dance
Volleyball	Yoga	Gymnastics	Golf
Bocce	Hip Hop	Dodgeball	Cheerleading

### *What if my child does not like sport?*

There are several reasons why some children do not like sports, including:

- Fear of failure
- Lack of understanding
- Peer pressure
- Over competitive environment
- Self-conscious
- Undeveloped skills
- Limited sport choices

Peak Sports and Learning, recognises these reasons and has developed programs that break down these barriers and are inclusive for all. Programs will cater for elite sports children, whilst also catering for children with little or no sporting background. Children will be encouraged to participate in all forms of sport and physical activity where applicable. If your child is having difficulty with or is really not enjoying an activity alternate arrangements can be made to better suit their needs.



## Before & After School Care Program

During our Before School Care program children are involved in various activities that help prepare them for the school day ahead such as sports, craft and cooking.

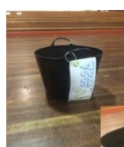
Our After School Care service is highly sought after and loved by both parents and kids! We implement a daily program with a sports and learning focus that enriches children's learning and helps them to achieve their highest! Our program is developed in accordance with the National Quality Framework, the My Time our Place Learning Outcomes and Quality Areas and the NSW Department of Education and Training Curriculum and Syllabus. With qualified and training school teachers on staff, our team can support the educational needs of children, including language and literacy, mathematics, PDHPE and creative arts.



Homework Rotations



Home Reading Rotations



Sustainability (Worm Farm & Veggie/Herb garden)

Tooth Defenders (BSC)



Sun Safety



Sports Rotations





## Vacation Care Program

We have so much fun during the school holidays! Our Vacation Care program offers a range of activities for primary school aged children. The program takes place every school holidays and on pupil free days operating out of the school hall. Our fun filled program is guaranteed to keep your children happy, safe and busy during the school holidays!

### Sample Program:

**PEAK SPORTS AND LEARNING**

**DEC 20–JAN 21 VACATION CARE PROGRAM**  
7:00AM - 6:00PM  
CCS APPLIES TO FEES

**ST JOHN'S**

**Thursday 17th December**  
**SCHOOL'S OUT**  
To celebrate the end of the school year and to kick start the holidays, you'll get to choose what we do at the centre today!  
Programmed Activities: Apple Prints + Team Building

**Friday 18th December**  
**RIDE ON OVER**  
Bring along your scooter, skateboard or anything on wheels and have fun skating the day away!  
No helmet, no ride.  
Programmed Activities: Cartoon Cars + Dodgeball

**Monday 21st December**  
**DISCO PARTY**  
Get your dancing shoes on for a fun day jam packed full of dancing, fun and games at the Peak disco!  
Programmed Activities: DIY Disco Ball + Cricket

**Tuesday 22nd December**  
**ACTIVE KIDS**  
We're taking care of our bodies today by staying super active! Participate in today's sport and team games!  
Programmed Activities: Soccer Ball Sketch + Relays

**Wednesday 23rd December**  
**DISNEY COOKING**  
Pop on your chef hat and apron and join us in the kitchen today. We'll be busy cooking up lots of yummy Disney inspired recipes!  
Programmed Activities: Toy Story Aliens + T-Ball  
Additional Cost: \$2

**Thursday 24th December**  
**MERRY CHRISTMAS**  
It's beginning to look a lot like Christmas! Join us for Christmas games and craft as we get ready for the arrival of Santa!  
Programmed Activities: Snowflake Quills + Touch Football

**Friday 25th December**  
**CLOSED**  
Merry Christmas + Happy New Year  
25th December - 1st January

**Monday 4th January**  
**NEW YEAR'S PARTY**  
Happy New Year! Ring in the new year and party as we celebrate 2021 and all the good things to come!  
Programmed Activities: Chinese Dragons + Circus Skills

**Tuesday 5th January**  
**MYSTICAL MAGIC**  
Come along today dressed as your favourite Harry Potter character and get set for a magical day full of witchcraft and wizardry!  
Programmed Activities: Salt Jellyfish + Circus Skills

**Wednesday 6th January**  
**LITTLE PICASSOS**  
Calling all artists! Let your creative mind do the talking today as we dabble in all things arts and crafts!  
Programmed Activities: Crazy Cubes + Volleyball

**Thursday 7th January**  
**MATILDA'S FARMYARD**  
Matilda's Farmyard is visiting Peak today! Get your farmers boots on as you nurse and feed lots of cuddly animals!  
Programmed Activities: Baa Sheep + Handball  
Additional Cost: \$14

**Friday 8th January**  
**PEAK TURNS 11**  
Join us for our 11th Birthday Bash! Jump for joy on the jumping castle and play lots of party games!  
Programmed Activities: Pinatas + Oz Tag

[admin@peaksportslearning.com.au](mailto:admin@peaksportslearning.com.au) 1300 GO PEAK (1300 467 325) [www.peaksportslearning.com.au](http://www.peaksportslearning.com.au)

## What to pack for your child?

Children must arrive with:

- enclosed shoes
- hat
- sun smart clothing
- lunch
- labelled drink bottle each day

## Permission for Excursion & In-service activities

- Peak Sports & Learning has consent forms for each Vacation Care day where there is an additional activities such as an Excursion or In-service activity run.
- The authorised nominee dropping the child off at the centre is to sign this form on arrival.

## Availability

Bookings will be confirmed subject to availability. Where a Vacation Care day reaches capacity a waitlist will be observed.

# Our Learning & Communication Tools

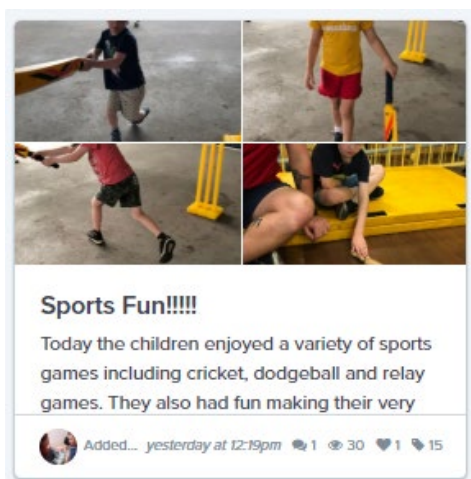


Keep up to date with what your child has been up to at Peak with our Learning platform Storypark! Designed with the convenience of an App to help us record and share your child's milestones and activities at Peak. The Family App can be downloaded from the App store for Apple users or GooglePlay for Android users. Families will receive via email an invitation to get started which will have a temporary password to register and sign in. If you see our staff snapping photos at the centre, make sure you're all set up to not miss the latest stories!

If you do not receive your invitation, kindly contact our office and we can resend!

Click on the links below or find these links also from

<https://www.storypark.com/au/families/>



## Opt-out of all marketing email? Please join our mailing list!

Upon registering with Peak, you will be asked if you would like to 'Opt-out of all marketing email'. We ask that you please don't but if you do, we will re-check this with you on enrolment.

As our email platform, MailChimp is classed as a marketing platform we have to follow anti spam regulations. We do not intend on sending any sales information, spam etc but only important centre information such as temporary location changes, Vacation Care Programs, Health Alerts, Newsletters etc.

If you change your mind in the future, you are able to opt out at any time using the unsubscribe feature at the bottom of any MailChimp email.





# Child Care Subsidy

## Child Care Subsidy

From 2 July 2018, the Government introduced the new Child Care Subsidy (CCS). Peak Sports and Learning is an approved child care service to pass on Child Care Subsidy reductions provided by the Government. Parents may apply for CCS via Centrelink and complete their assessment in their online MyGov account.

The amount of Child Care Subsidy you can get depends on your circumstances. Factors considered are:

- Your family's income
- The hourly cap based on primary school aged care
- The hours of activity you and your partner do

More information can be found at <https://www.humanservices.gov.au>

It is the parent/carer's responsibility to apply for these subsidies and to ensure they have a current assessment notice. Failure to comply with the Family Assistance office will result in full fees being charged. Please note for CCS to apply parents must supply us with each child's CRN number and a parent's CRN number, this must be filled out on the enrolment forms. Families must then confirm Peak Sports & Learnings details in their myGov for approval for the subsidies to be paid through the service.

## Immunisation

Child Care subsidies may not be available to you if your child is not up to date with immunisation requirements.

## Ceased Enrolment & 14 week rule

Your enrolment details will end if your child:

- stops attending the child care service
- has not attended child care for 14 weeks in a row.

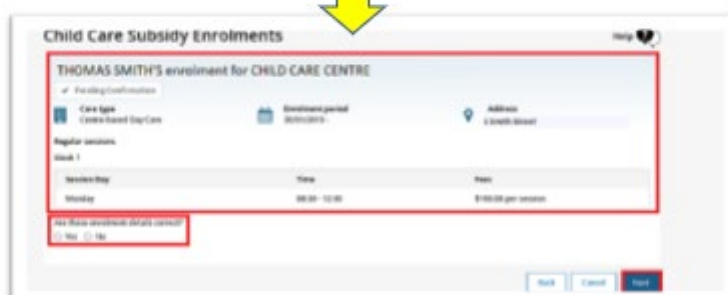
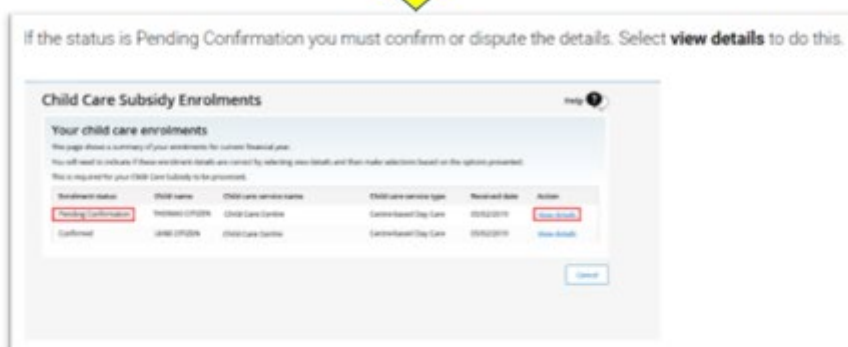
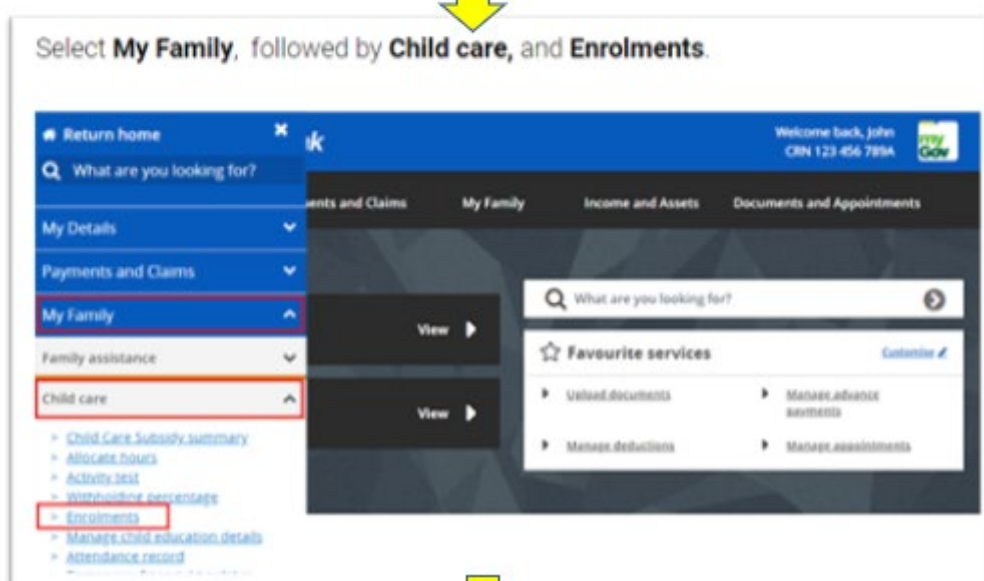
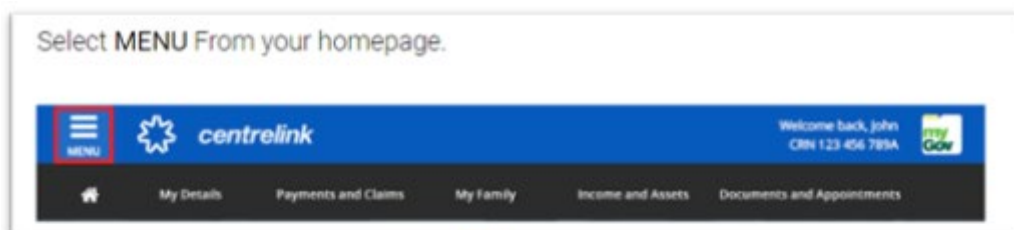
For example, this can happen if you only use vacation care during some school holidays.

If your enrolment ends, Centrelink will send you a letter and will ceasing paying subsidies until a new care arrangement is re-established.

We can easily re-establish the care arrangement when you are ready to make new bookings. This will automate a new Enrolment notice which you will then be able to review and confirm online through your myGov to ensure continuity of Child Care Subsidy.

## Confirming Peak Sports & Learning

Families need to confirm their enrolment notice via their myGov account in order for subsidies to be applied. This Enrolment Notice is a Complying Written Arrangement (CWA) which is an agreement between you and us as your provider to give care in return for fees. You can do this using your [Centrelink online account](#) through [myGov](#). Select **Family** from the menu, followed by **Child care** then **Enrolments**.



# Statements and Account Payments

## Viewing your statement - Mondays

Families receive an email notification from FullyBooked each Monday that their statement is available to view for the past week of attendances.

Statements will display attendances and fees and/or confirm any payments received.



## Direct Debit - Wednesdays

Direct Debit is scheduled from your nominated bank account or credit card each Wednesday. Please contact our office prior to the direct debit date if there are any issues with funds being available. Clearance time can depend on bank. Payment takes up to 48 hours to clear to our account.

Direct debit transactions are referenced on your bank statement as "Peak Childcare".

## Ezidebit Fees

Direct debits incur transaction fees which are payable by families

Bank Account	<i>Per transaction</i>	\$0.75
Visa/Mastercard	<i>Per transaction</i>	1.87% surcharge
Amex	<i>Per transaction</i>	4.4% surcharge
Dishonour Fee	<i>Per failed transaction</i>	\$14.80

## Non-Payment of Fees

If an account is more than 1 month overdue, a late fee of \$20 will be charged to the account.

If payment due dates are repeatedly not met, Peak Sports & Learning can request the family move to Direct Debit in order to provide a continuation of service. Where payment plan commitments are not met, Peak may suspend services until the account is paid up to date.

# The National Quality Framework

The NQF includes:

- A national legislative framework that consists of the Education and Care Services National Law and Education and Care Services National Regulations
- A National Quality Standard (NQS)
- An assessment and ratings system
- A regulatory authority in each state and territory which has responsibility for the approval, monitoring and quality assessment of services
- A national body responsible for providing oversight of the new system and ensuring consistency of approach – the Australian Children's Education and Care Quality Authority (ACECQA).

The Australian Children's Education and Care Quality Authority (ACECQA) is an independent national authority that assists governments in administering the National Quality Framework (NQF) for children's education and care.

Key to the National Quality Framework is continuous quality improvement. Authorised Officers from the Regulatory Authority, for NSW it is the Department of Education, are responsible for assessing and rating education and care services against the National Quality Standards that come under the 7 Quality Areas below:

**1** Educational program and practice

**2** Children's health and safety

**3** Physical environment

**4** Staffing arrangements

**5** Relationships with children

**6** Collaborative partnerships with families and communities

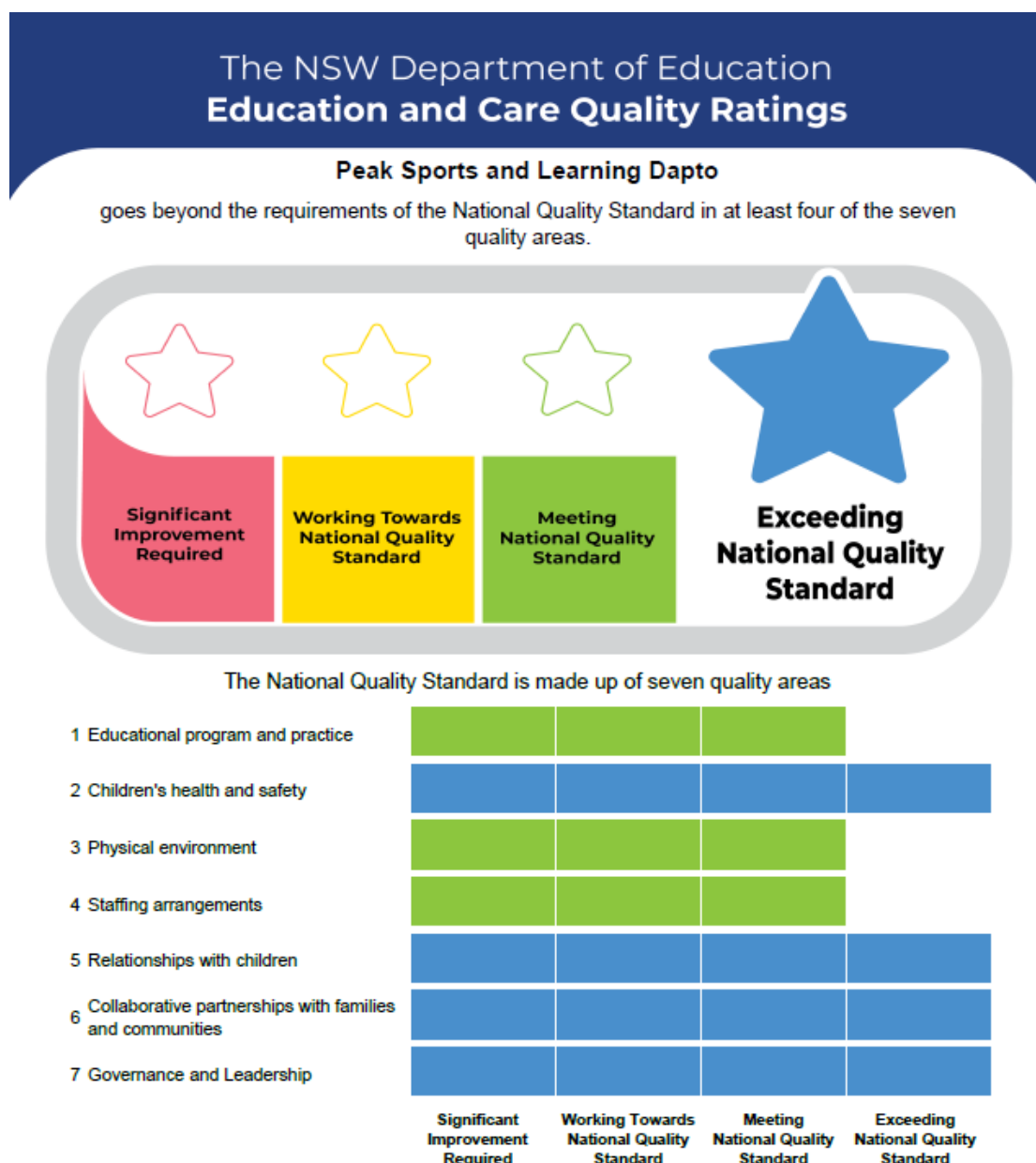
**7** Governance and leadership

For more information regarding the NQF visit [www.acecqa.gov.au](http://www.acecqa.gov.au)

# Peak St Johns Rating & Assessment

The National Quality Standards include seven Quality Areas; we were assessed in August 2019 and our rating was awarded as Exceeding National Quality Standards!

An integral part of the assessment and rating process is the services Quality Improvement Plan. Please speak to the Responsible Person if you would like to look at this.



This service was last assessed in July 2019 against the *National Quality Standard for Early Childhood Education and Care and School Age Care* and these ratings have been awarded in accordance with the *Education and Care Services National Law Act 2010* and the *Education and Care Services National Regulations 2011*.

Date of issue: 26 August 2020

ASR-00027126

SE-40001709



[education.nsw.gov.au/early-childhood-quality](https://education.nsw.gov.au/early-childhood-quality)



# Policy Information

The latest copy of our Policies are always available for download from our website online or a hard copy is available at the centre <https://www.peaksportslearning.com.au/programs-policies>

[Home](#) [What's New?](#) [Our Centres](#) [Our Program](#) [Policies & Procedures](#) [Resources](#) [Contact Us](#) [Feedback](#)

## POLICIES AND PROCEDURES

Our Enrolment Handbooks are available from the individual centre page - See 'Our Centres'.

Service policies and procedures are available below. Hard copies of our Policies and Procedures are always available on site at our centres.

### Nutrition

Peak Sports and Learning aims to help children and families develop an awareness of the importance of good nutrition, modelling good attitudes and facilitating healthy eating habits.

Peak Sports and Learning will provide your child with healthy food choices each day. Drinking water will be available to the children at all times.

### Allergies and Intolerances

All allergies and intolerances are considered by staff when preparing food. We will endeavour to cater for your child's dietary requirements, please ensure you have completed appropriate documentation regarding any allergies or intolerances. Severe intolerances must have a Health care Plan.

### Nut Aware Centre

We recognize that food allergies can cause serious, life threatening conditions for some children. To keep all our children safe, Peak aims to eliminate those foods that have been determined to cause allergic reactions in children. We cannot guarantee a completely nut free environment since other activities and programs occur on the school premises. We will, however, maintain a nut aware environment during operating hours. We would appreciate you considering this when packing your children's snacks for the day - this includes Nutella Spread.



# Sun Protection

Peak Sports and Learning encourages and promotes the need to protect children's skin and educate them about sun smart behaviour, thus reducing of skin damage from exposure to the sun. Peak Sports and Learning strictly enforces a no hat no play rule during summer months and asks all parents to send their child with appropriate clothing and hat.

## Procedures

Sun safety will be conducted at our service throughout the whole year. Staff will ensure that all children attending our service are protected from the harmful effects of the sun at all times.

The Coordinator will:

- Ensure all children and staff wear hats that protect the face, neck and ears, and SPF 30+ broad-spectrum, water-resistant sunscreen when involved in outdoor activities.
- Parents will be asked to provide a Sun Smart hat for their child and encourage them to wear it.
- Parents will be asked to provide appropriate Sun Smart clothing when the service participates in outdoor/water related activities.
- Ensure all staff to act as positive role models for children in all aspects of Sun Safety behaviour.
- Seek ongoing support from parents and the school community for the Sun Smart policy and its implementation, through newsletters, parent meetings etc.
- Ensure all students without adequate sun protection use shaded or covered areas during outside play times
- Ensure that, wherever practicable, outdoor activities take place before 10 am or after 3 pm
- Ensure that adequate shade is provided during outdoor events including excursions
- Ensure that SPF30+ broad-spectrum, water-resistant sunscreen is readily available

# Electronic Devices

Peak Sports and Learning aims to promote inclusivity by limiting any use of electronic devices whilst in care, unless such speciality days such as "Game On" Day in Vacation Care where they are permitted to be used.

Peak Sports and Learning does not accept liability to any devices damaged or lost at the services therefore, on days such as game on day, Peak encourages children to not bring their own devices, but rather to participate in electronic and non-electronic games that are provided at the centre.

During Before or After School Care, exceptions may be made where children's homework is only accessible electronically, and all services have a computer or tablet that may be used on these occasions.

## Excursions

Places are limited for some excursions. All excursions are compulsory if your child is booked in for that day. Your child must be at the centre by the designated time on the booking sheet.

The children will be asked to wear a fluoro wristband to identify them on excursion with the Peak contact details on them. We also advise that each child bring their own bag on excursion days.

## Lost Property

We encourage families to label everything and work alongside us to instil, in your child, the importance of respecting and caring for their belongings and those of others. Labelling all of your child's belongings will help us in this process and may act as insurance when belongings have been placed in lost property. Participants are responsible for their own belongings. We also discourage that children bring valuable and personal property to Peak so that it doesn't get lost or damaged. The centre will not be held responsible for the loss of property. At the end of the holiday period all lost property is donated to charity.

## Privacy Statement

Peak Sports & Learning collect health and personal related information for the purpose of registering your child. We are committed to protecting confidentiality; all information is stored securely. If you choose not to provide this information, we may not be able to finalise your enrolment. If you have any questions or queries or wish to access to further information, please contact Administration.

## Complaints & Grievances

If you have a complaint or grievance speak to the Responsible Person on site. If you do not wish to talk to the Responsible Person, please contact the office to speak with the Nominated Supervisor/Director Ph. 1300 467 325. If you wish to remain anonymous you can fill in a suggestions sheet and place it in the suggestions box at the centre. Alternatively, you can email any concerns to head office [admin@peaksportslearning.com.au](mailto:admin@peaksportslearning.com.au). We will always try our best to address whatever questions or concerns you may have.

## Early Childhood Education Directorate NSW Department of Education

The Department's Early Childhood Education Directorate can follow up complaints about services. If our service has not adequately resolved your concerns, you can contact the Directorate's Information and Enquiries Team the details listed below.

**Address:**

Locked Bag 5107  
PARRAMATTA NSW 2124

**Website:**

[www.dec.nsw.gov.au/ecec](http://www.dec.nsw.gov.au/ecec)

**Email:**

[ececd@det.nsw.edu.au](mailto:ececd@det.nsw.edu.au)

**Phone:**

1800 619 113 (toll free)

**Fax:**

(02) 8633 1810

# Enrolment Terms & Conditions

- I understand that by enrolling my child in this service, I have read and agree to abide by Peak Sports and Learning's Policies and Procedures, found on the Peak Sports and Learning website; <https://www.peaksportslearning.com.au/programs-policies>
- I agree to pay for all of the days my child is enrolled in and those that are not cancelled within the relevant time frame.
- I authorise the service to transport my child via bus and/or car (if needed) to and from the centres, under the compliance of the appropriate legislations, regulations and Transport Operations.
- I acknowledge that in the event that I fail to pay the Childcare fees on time, Peak Sports and Learning may be at liberty to terminate forthwith the provision of childcare facilities and/or services for my child. I understand that if my fees are not paid, Peak Sports and Learning may request that I go on a payment plan which will include Direct Debit.
- I acknowledge that Peak Sports & Learning is required to disclose information to the Department of Education and other government agencies. I understand that the service adheres to the Privacy Act 1988 and will ensure that information in my child/ren's enrolment record is not divulged to another person unless necessary for the care or education of my child/ren, to manage medical treatment of my child/ren, where expressly authorised by the parent, prescribed in the Children's Services Regulations 2009, if required by law or in accordance with the Privacy Act 1988.
- I understand that if my child has health related issues, I will provide the service with all the necessary action plans and all mandatory medical documents.
- I consent to all Peak Employment Services employees having access to my child's personal details for the purpose of outside school hours care at Peak Sports and Learning.
- Vacation Care: On Vacation Care days I give consent for any Authorised Contacts signing my child in to sign the relevant consent form required for planned excursions or incursion days. I understand that all permission note details will be available on Peak's Website with the Vacation Care program.
- Under the recommendations of the Cancer Council, I give my consent to educators at the centre to apply SPF30+ sunscreen to my child.
- I declare that the information in this enrolment form is true and correct and acknowledge that I am to inform the service immediately in the event that there is any changes to this information.
- Peak Sports & Learning reserves the right to change the terms and conditions at any time.

## Further Information

Peak Sports and Learning reserves the right to make changes to the program without notice, including cancellations of programs due to insufficient numbers or weather conditions. Program leaders reserve the right to cancel a participant's enrolment should their behaviour be deemed unacceptable or is placing other children or staff at risk.



# Contact Us

## Administration

Contact our Administration team regarding enquiries with statements, payments, general enquiries and Centrelink.

Phone: 1300 GO PEAK (1300 476 325)

Email: [admin@peaksportslearning.com.au](mailto:admin@peaksportslearning.com.au)

## Suggestion

If you wish to remain anonymous complete a suggestion sheet for our suggestions box. Otherwise please speak to the Responsible Person on duty.

## Query/Question

Please speak to the Responsible Person on duty or our Administration team.

# Where to find us?

Our centre is located in the school hall of St John's Catholic Primary School – Access is from Werowi Street, Dapto.

